

## Zeropoint Quickclamping cylinders with turbine for automated solutions

2

### Zeropoint Quickclamping cylinders with turbine for automated solutions with:

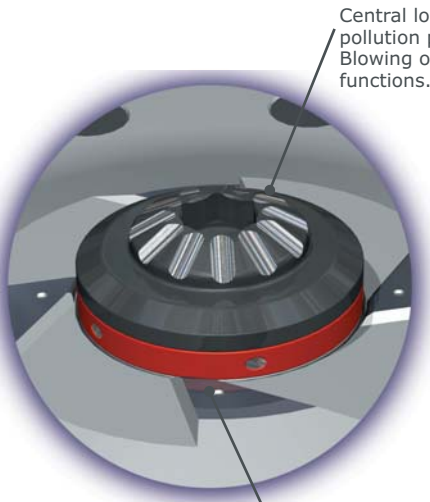
- Turbine function for complete cleaning of support surfaces without „shady side“
- Central locking against pollution particles
- Hydraulic or pneumatic locking sensors
- Control of contact by air blocked
- Hydraulic pre-expulsion for palletizing solutions with also possibility to swing completely free during the catchment
- No damage of media-coupling



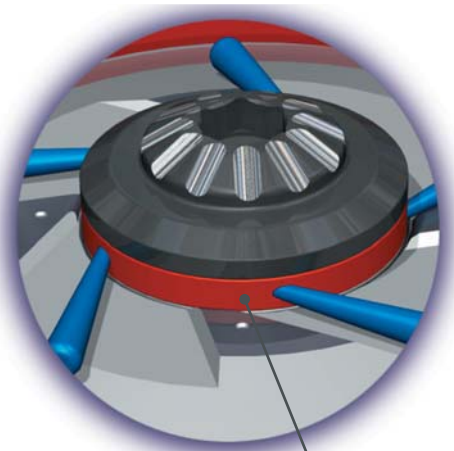
Stainless

Only by  
**Zero-Point-  
Systems**

**NEW!**



Central locking against pollution particles. Blowing out and sputter functions.



Turbine function for complete cleaning of support surfaces without „shady side“.

Isolated applications with blowing off function and control of contact by air blocked.



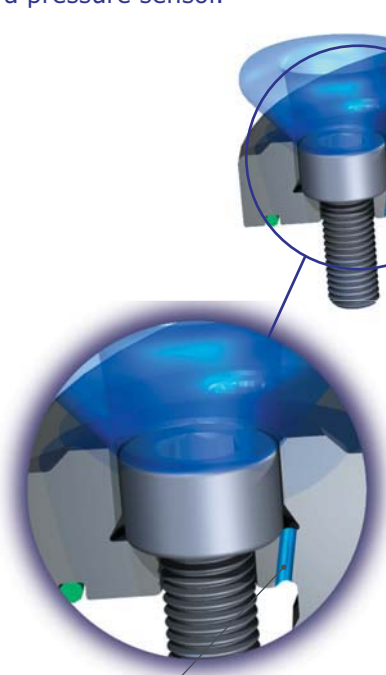
# Zeropoint Quickclamping cylinder with release and contact controls for automated solutions

## Overview of monitoring options - 3 possibilities of monitoring (shown in a clamping system)



### Pneumatic monitoring

Function of blowing out by compressed air for the cleanliness of support surfaces. After the installation of the pallet of workpieces, it occurs in the pressure line a dynamic pressure, of which this one could be detected by the mean of a pressure sensor.



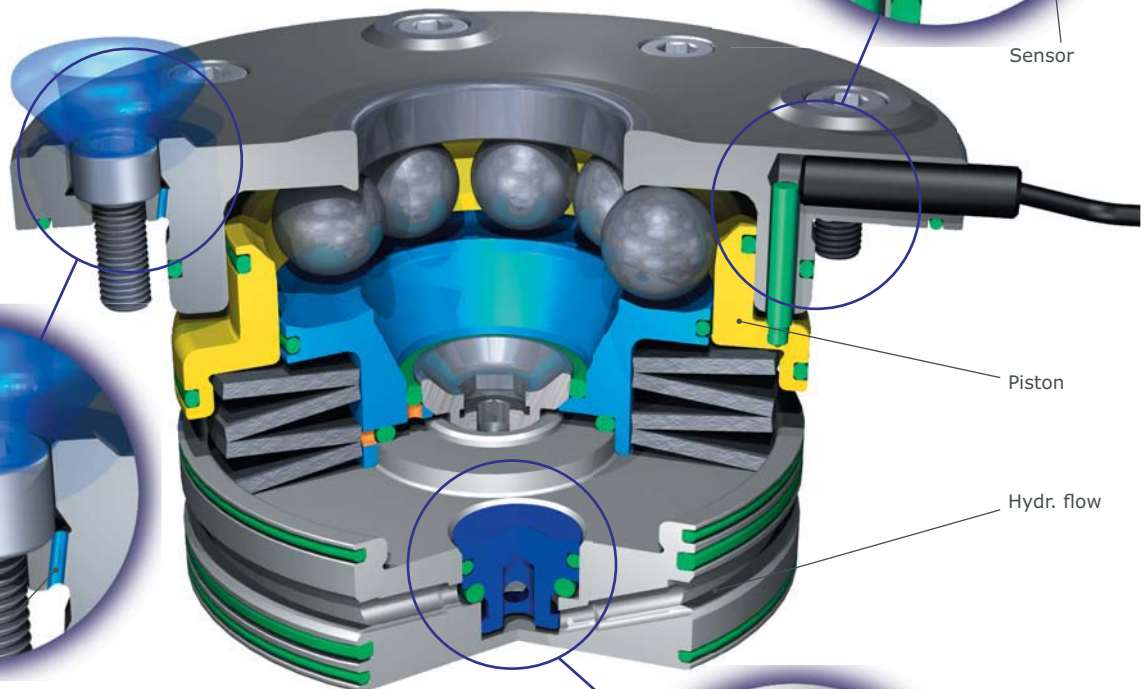
Dynamic pressure

### Electronic monitoring

Direct position monitoring of the clamping piston in the Zeropoint Quickclamping cylinder by the mean of an inductive sensor. Electronic signal when the Zeropoint Quickclamping cylinder is clamped. Small height necessary for the assembling like for the Zeropoint Quickclamping cylinders K5 (19,8 mm) and K40 (42 mm).



Sensor

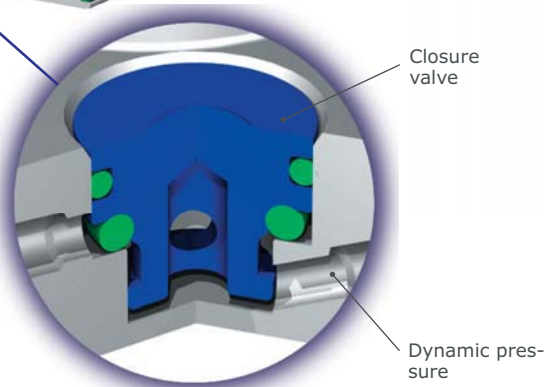


Piston

Hydr. flow

### Hydraulic monitoring

Monitoring of the clamping piston by a hydraulic closure valve. Dynamic pressure when the Zeropoint Quickclamping cylinder is opened, which can be detected by mean of a pressure sensor. Free hydr. flow when the Zeropoint Quickclamping cylinder is closed. Despite a hydraulic sensor, only small height for assembling is necessary.



Closure valve

Dynamic pressure

# Zeropoint Quickclamping cylinder with release and contact controls for automated solutions

## Standardized and individual automatic solutions of Zero-Point-Systems, like ...

- Media ducts
- Hydraulic or pneumatic sensors
- Blowing out, blowing off and sputter
- Central locking against pollution particles
- Horizontal Zeropoint Quickclamping cylinder by vertical installation
- Surface control by air blocked
- Isolated application

### Zeropoint Quickclamping cylinder with release and contact controls for automated solutions

#### Hydraulic release

Cover and piston hardened  
Repeat accuracy < 0,005 mm

Stainless

No. 6370EARHASV

Order no.	Pull-in force up to [kN]	Holding force [kN]	Weight [g]
306068	20	55	2800

#### Use:

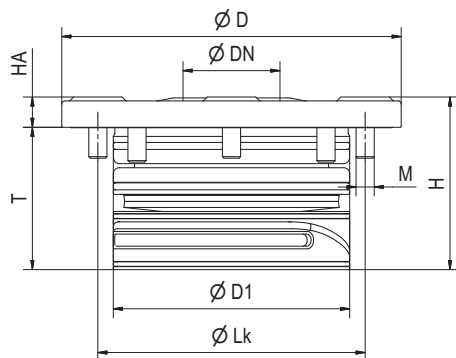
For installation in base plates, machine tables, clamping profiles, columns and towers, machine pallets and clamping pallets. Very small footprint in automation solutions

#### Note:

- Hydraulic locking control by means of integrated control valve. Flow in locked position. The unlocked position can also be monitored with parallel control of the individual clamping modules.
- Isolated application with sealing air for automatic support control
- Blowing out for automatic dirt removal (0.6 Mpa)
- Blowing off of the contact surface
- Simple deep bore holes
- All of the product advantages from pages 8 and 9 are integrated into the clamping module.

#### On request:

- Installation diagrams on request
- Further automation options



#### Dimensions:

Order no.	ØD	ØDN	ØD1	ØLk	H	HA	M	T
306068	112	32	78	8 x 88	57	10	M6	47

# Zeropoint Quickclamping cylinders with pusher and central locking against pollution for automated solutions

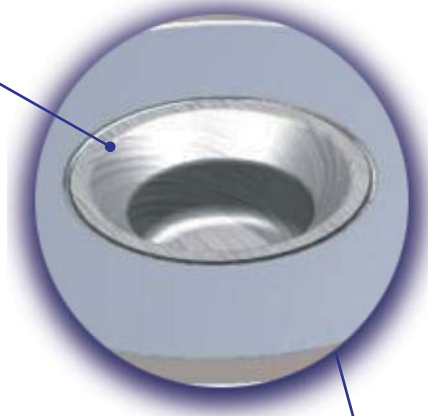
## Zeropoint Quickclamping cylinders with for automated solutions with:



- pre-explulsion
- Central locking against pollution

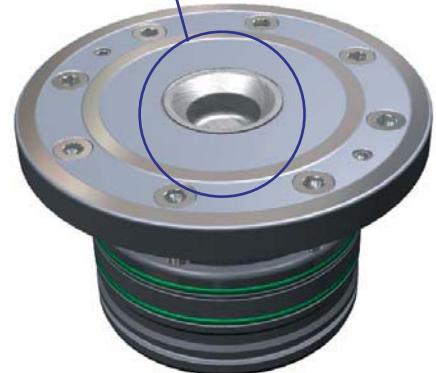
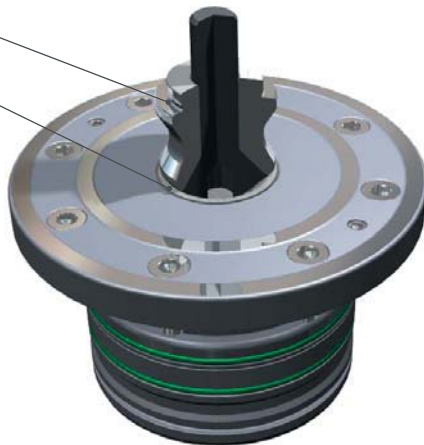
### Central locking against pollution particles

The central locking prevents the entry of dirt into the nipple bore. The central locking element advances with an individually defined spring force



### Blowing out and sputter functions

Nipple  
Central locking



## Zeropoint Quickclamping cylinders with pusher and central locking against pollution for automated solutions

### Hydraulic release

Cover and piston hardened  
Repeat accuracy < 0,005 mm



**No. 6370EARHMV**

Order no.	Pull-in force up to [kN]	Holding force [kN]	Weight [g]
<b>306027</b>	20	55	2100

### Use:

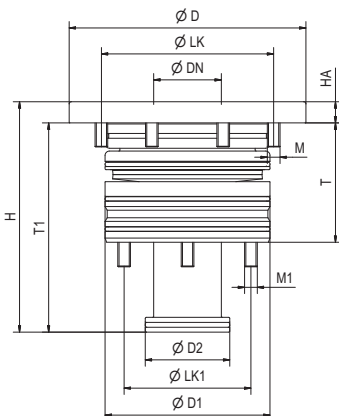
For installation in base plates, machine tables, clamping profiles, columns and towers, machine pallets and clamping pallets.

### Note:

Through the central locking the pollution particles can not go into the nipple bore. The central locking element advances with an individually defined spring force

### On request:

- Installation diagrams on request
- Hydraulic move-out of central locking



### Dimensions:

Order no.	ØD	ØDN	ØD1	ØD2	H	HA	ØLK	ØLK1	M	M1	T	T1
<b>306027</b>	112	32	78	40	109	10	88	60	M6	M6	66,5	99

Subject to technical alterations, errors, misprint and typographical failures